

SYDNEY GLASS LIFTERS

GLASS LIFTING EQUIPMENT HIRE

P: 0411 429 813 E: HIRE@GLASSLIFTERS.COM.AU W: WWW.GLASSLIFTERS.COM.AU

SGL 5.1m Glass Hoist



*On site competency training provided for every hire

Features:

- SLL 360kg
- Working height 5.1m
- Provides class rotation of 360 degrees
- 1 person operation (eliminates the need of crane an operator)
- 2 speed winch
- 200mm non-marking wheels
- Adjustable pad spread
- Battery operated, dual
- Daily and weekly rates available

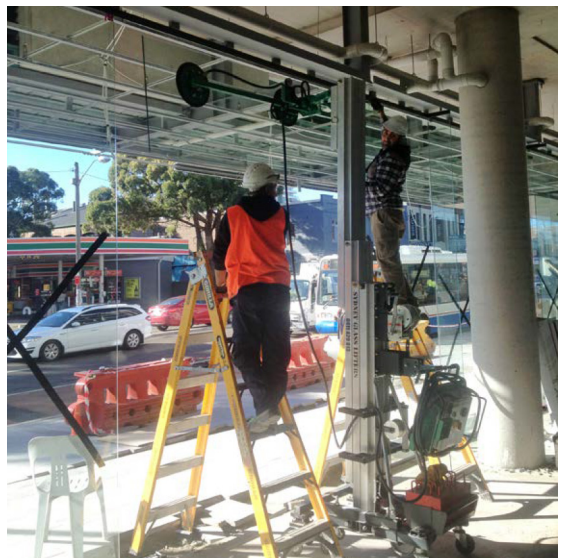
Load capacity	360kg
Height - minimum	1.68m
Height - Maximum	5.10m
Length in working position	0.63m
Dead weight	204kg
Gross weight	289kg
Weight less counterweights	145kg

SYDNEY GLASS LIFTERS

SYDNEY GLASS LIFTERS

GLASS LIFTING EQUIPMENT HIRE

P: 0411 429 813 E: HIRE@GLASSLIFTERS.COM.AU W: WWW.GLASSLIFTERS.COM.AU



SYDNEY GLASS LIFTERS

15 Short Street, Gladesville, NSW 2111 | Mobile: 0411.429.813 | Fax: 02.9618.2145 | www.glasslifters.com.au | hire@glasslifters.com.au